

How to Build Resilience into Health and Safety Management

The world of work is changing, exposing businesses to new and evolving forms of risk. While the need for integrated risk management isn't new, few businesses are equipped to consistently deliver on this strategy in the face of dynamic change. An estimated 2.78 million people die from work-related causes each year, and **374** million more people suffer from nonfatal occupational injuries.

In a recent Sphera Survey¹ ...



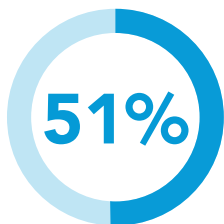
91%
say technology has made their companies and work teams safer

88%
of companies say safety is part of corporate value structures

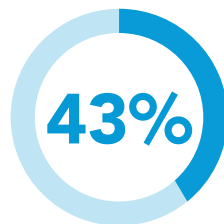
60%
of organizations are still operating with siloed or basic data and few piecemeal insights



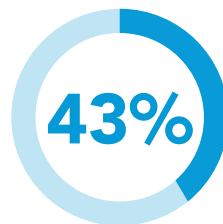
What are the reasons why there are still gaps between **intent** and **reality**?



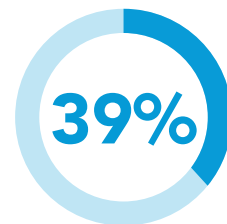
Loss of experienced personnel



Lack of operational risk visibility



Conflicts between policy and frontline practices

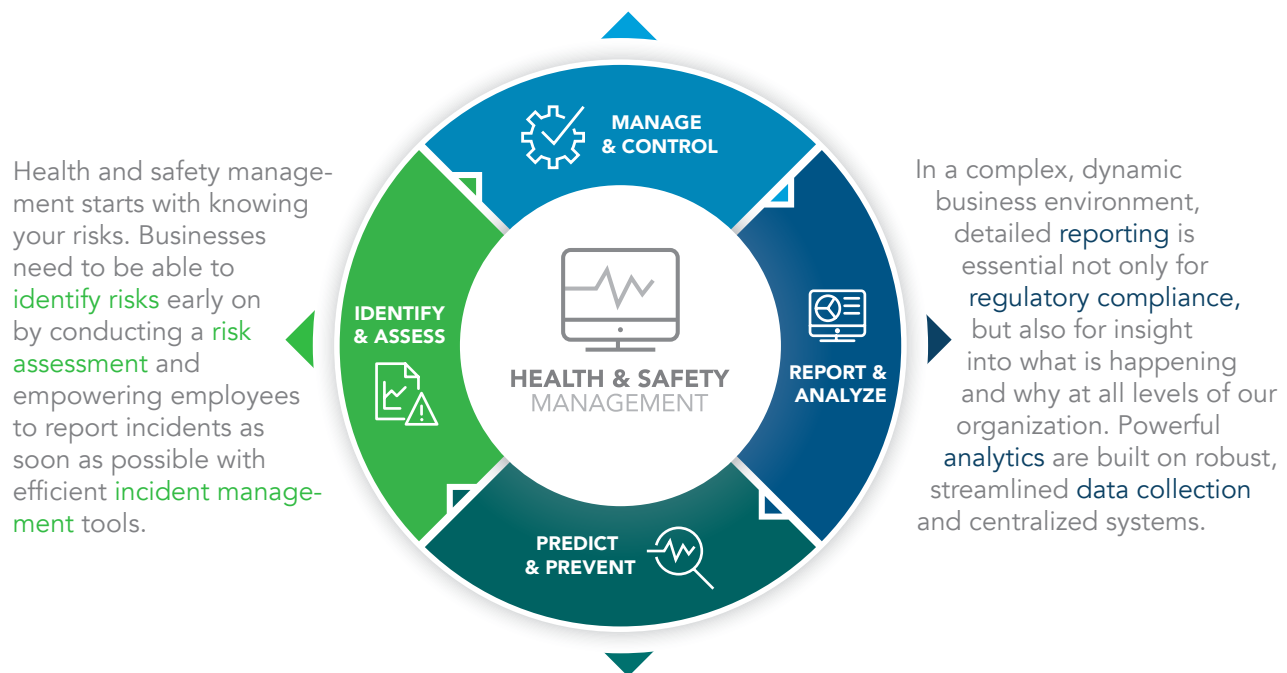


Poor process execution and management of change

To fully capture all risks and offer solutions to manage them efficiently, businesses need a holistic and integrated Health and Safety Management process.

There are **four basic elements** of resilient health and safety management across industries:

Maintaining consistent health and safety processes is an important element of resiliency. In the face of change, this means businesses need to control the variables they can via consistent, thorough audits and inspections. The ability to track open actions and remediations to monitor progress toward risk mitigation, secure document and policy management and full oversight of contractor safety from prequalification to post-job evaluation.



Finally, adapting as new risks emerge depends on effective change management, training and compliance. Instilling strategies to predict and prevent risk can help organizations create the latitude they need to transform as business environments change.

LEARN HOW FOUR COMPANIES PUT THESE PRINCIPLES INTO ACTION.

Read our e-book, "Building a Resilient Safety Strategy," and learn how four companies put these principles into action. They used the SpheraCloud Health and Safety Management Software, our mobile-friendly software that provides full-risk visibility and end-to-end management of safety events and activities. A variety of modules, such as audits, action and remediations, contractor safety, training and competency management, help companies to enable centralized reporting and compliance.

Explore how these insights have driven informed decisions, helping to predict and prevent safety events throughout organizations.

Want to know more?

[Read our e-book, "Building a Resilient Safety Strategy"](#)