

TOP 8 Criteria for Permit to Work

Budget constraints and fragmented responsibilities for industrial risk management mean buyers of Operational Risk Management (ORM) software seek out the most comprehensive integrated functionality that can be met by Control of Work software. To help operations decision-makers identify the best value, Sphera presents a series of content outlining the (4) levels of functionality required of Control of Work software: Isolations Management, Job Hazard Analysis, Permit to Work and Shift Management.

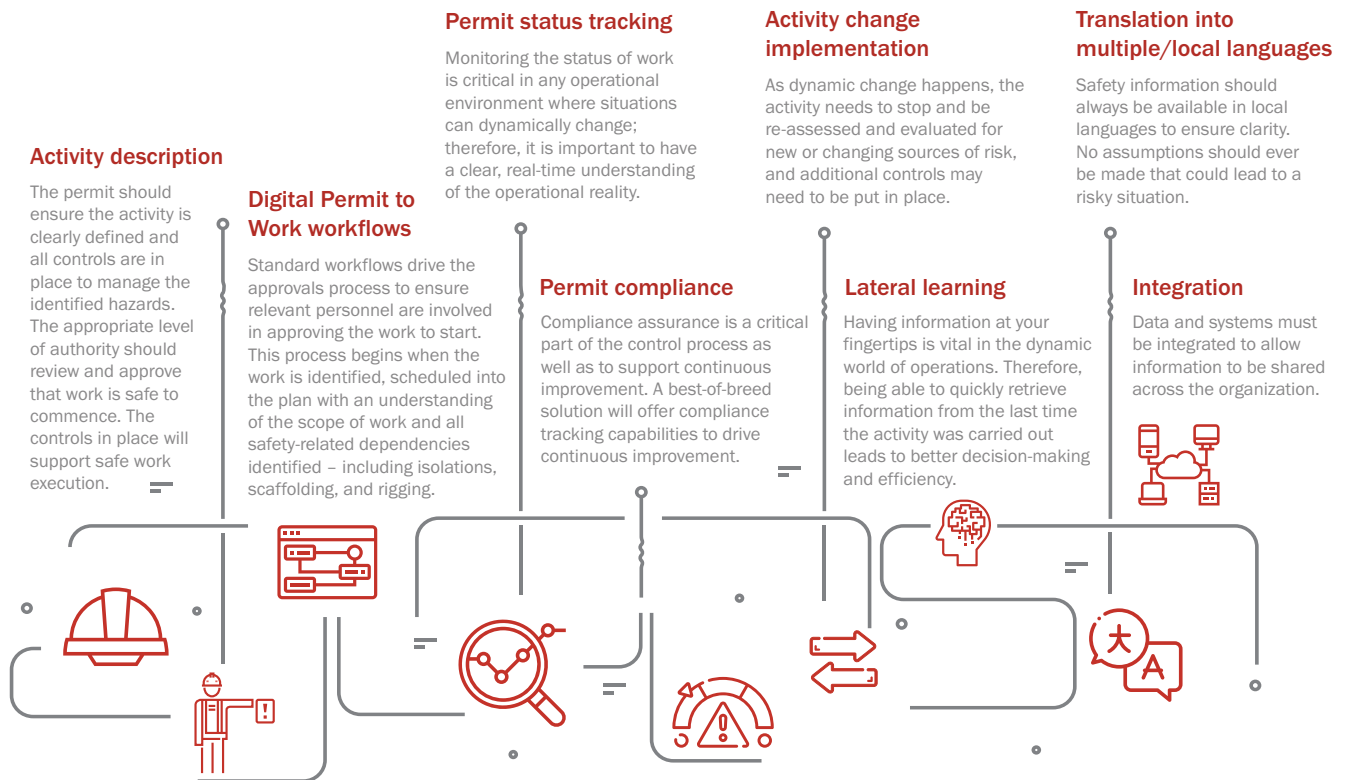
According to independent analyst and consultant, Verdantix, Permit to Work (PTW) represents



36% of the core functionality required to satisfy an effective, complete Control of Work solution.



Here we present the top 8 criteria required for managing work permits, and we outline how each component could operate in a best practice scenario.



Are you ready to implement best practice electronic Permit to Work (ePTW) leveraging the industry's leading Control of Work solution – available on premise or in the cloud? **Contact us.**